

# 500 XLS

*Developed for maximum stability.*



ORAL &  
MAXILLOFACIAL



AESTHETIC  
SURGERY



IVOM  
TREATMENTS

Order No. 15000005

## ADVANTAGES



- Versatile design to support a wide range of applications: OMF surgery, dental surgery, ophthalmic surgery and IVOM treatments (intravitreal operative drug applications)
- Outstanding price-performance ratio
- Multi-functional headrest element featuring two-dimensional and longitudinal adjustment
- Manual keypad with 4 memory positions, auto-run function, and reset key
- Removable foot keypad for backrest, seat and height adjustment, including on-off switch, 3 memory positions, and a reset key
- Power supply-independent battery box with integrated emergency shut-down switch
- 4 powerful drives for adjusting the backrest, footrest and seat elements as well as the overall height



- Mono lifting column designed for a maximum patient weight of up to 200 kilograms
- Rugged moving gear featuring 2 centrally braking steering casters and 2 rigid wheels for high stability combined with easy maneuverability
- Convenient push handles and smooth-moving casters



- Comfortable upholstery in anthracite F6461197 standard shade
- Easy mounting and dismounting
- Comfortable armrests, removable
- Low access height

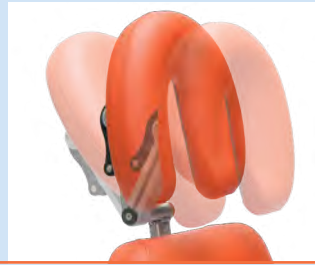




Power supply-independent battery box with integrated emergency stop button



Removable foot keypad for backrest, seat and height adjustment, including on-off button, 3 memory positions, and a reset key.



Multi-functional headrest element featuring two-dimensional and longitudinal adjustment.



Multi-functional manual keypad with four freely storable memory positions, auto-run function, on-off switch, and reset key.



Push handles on the foot end for easy maneuvering.



2 centrally braking steering casters.

## EQUIPMENT



Optional: Manual keypad holding bracket.

**Order No. 33230000**

Servo-motor powered operation via hand and foot keypad.

Optional: Norm rail for the back- /seatrest element.

**Order No. 33200000 / 33210000**

Stainless-steel accessory support system.

Stationary yet mobile.



Removable multifunctional foot keypad.

# 500 XLS

## ACCESSORIES



PADDED ARM BOARD  
with universal joint, with wrist  
secure straps  
Order No. 30780000



BACKUP BATTERY  
Order No. 30470000



SIDE PARTS  
(right + left) swiveling incl.  
locking, upholstered  
Order No. 31010001



FLEXIBLE SURGICAL DRAPE  
SUPPORT ROD  
incl. norm rail and mounting  
clamp  
with oxygen connection  
Order No. 33510009



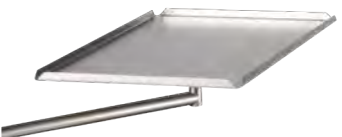
FLEXIBLE SURGICAL DRAPE  
SUPPORT ROD  
incl. norm rail and mounting  
clamp  
without oxygen connection  
Order No. 33510010



MONITOR ARM  
stainless steel, swiveling, incl.  
extendible I.V. Pole  $\varnothing$  25 mm  
Order No. 30240014



ACCESSORY MOUNTING  
SUPPORT  
stainless steel  
Order No. 33510037



INSTRUMENT TABLE  
50 x 30 x 1.5 cm, height-ad-  
justable, swiveling, detachable,  
incl. adapter  
Order No. 30650000



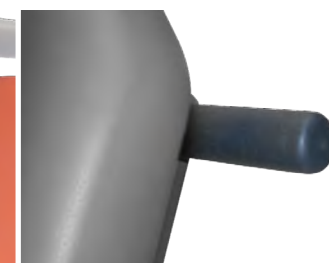
FOOT PROTECTION FOIL  
Order No. 33260000



INLAY HEAD PILLOW  
Order No. 33250000



TRAPEZE CUSHION  
wedge, for back/seat part  
Order No. 30220005



ADDITIONAL HANDLES  
pair  
Order No. 30690000

# 500 XLS

## ACCESSORIES



HAND REMOTE BRACKET  
Order No. 33230000



HAND CONTROL HOLDER  
for attachment onto I.V. Pole  
Order No. 33220000



I.V. POLE stainless steel  
ø 25/18 mm, one-hand height-  
adjustable 1070–1660 mm, 4  
hooks, max. 2 kg 84.4lbs/hook,  
glass and holder  
Order No. 30680000



NORM RAIL  
300 mm, seat part  
Order No. 33210000



NORM RAIL  
back part  
Order No. 33200000

## stayClean

*Practical single-use cover drape.*



Order No. 30340014

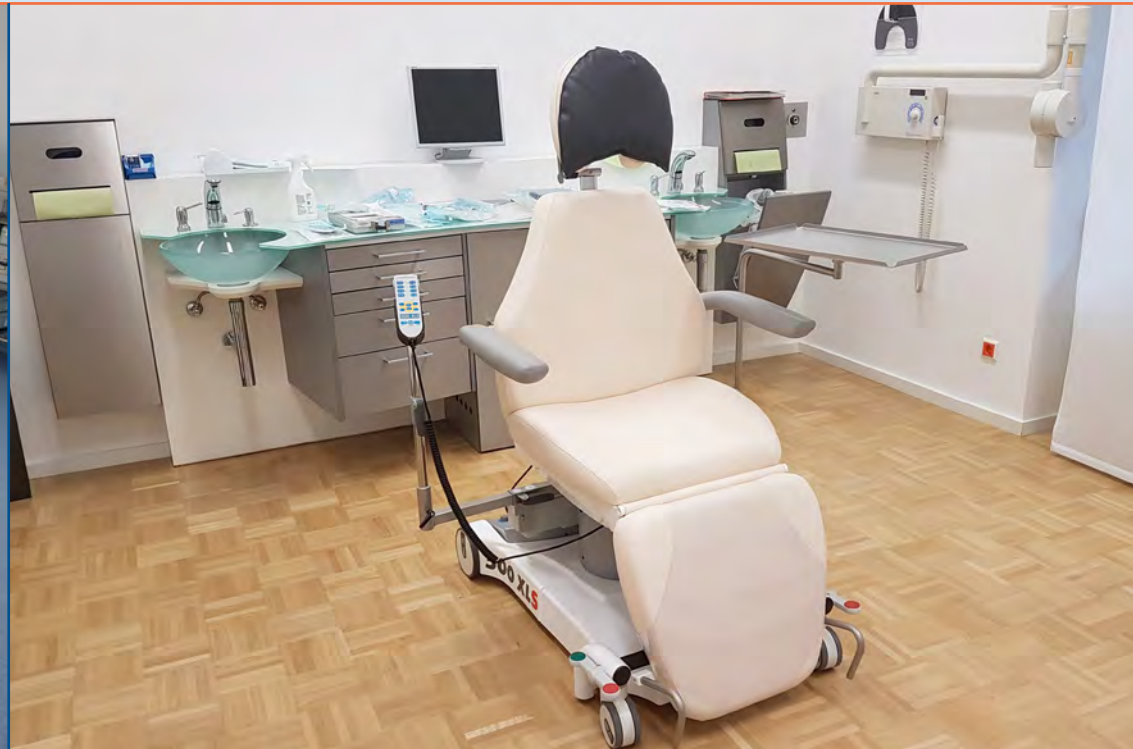


# 500 XLS

## REFERENCES



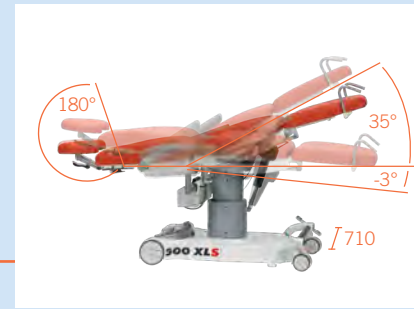
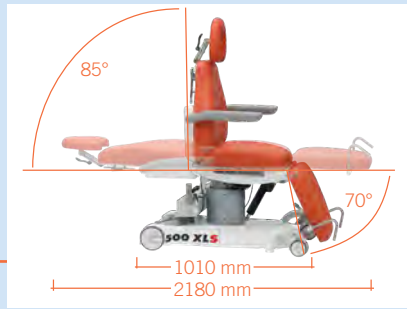
**DR. MED. MARKUS PFEIFFER**  
MÜNCHEN, DE



**KRANKENHAUS ST. JOSEF**  
BRAUNAU, AT

FURTHER REFERENCES: [UFSK-OSYS.COM/REFERENCES](https://ufsk-osys.com/references)

# 500 XLS



## SPECIFICATIONS

### Chassis

- Frame profile 60 x 30 mm
- Outside length 1,010 mm
- Outside width 710 mm
- Width incl. armrest 830 mm
- White paint finish
- Central brake, operable from both sides
- 2 ea. double casters ø 100 mm
- 2 ea. rigid casters ø 150 mm
- Foot keypad, removable (for overall adjustment, backrest adjustment, up/down seat adjustment; reset button; auto-run function; 3 memory positions)
- Emergency stop button
- With equipotential bonding connection

### Lifting Column

- Max. lifting force 280 mm
- Max. patient weight 200 kg
- Motors IPX4 with HAL sensoric, to be memorized

### Upper Frame

- 4-part support frame (head, back, seat, foot)
- Length 1,930–2,180 mm

- Width 610 mm
- Access height 580 mm
- Removeable upholstery
- Tundra skai colors see color chart

	Max. Load	Angle	Dimensions (l x w)
- Head part	10 kg	0°/+180°	275 x 275 mm
- Back part	80 kg	0°/+85°	610 x 610 mm
- Seat part	75 kg	-3°/+35°	510 x 605 mm
- Leg part	35 kg	0°/+70°	490 x 525 mm
- Height adjustment	200 kg		from 580-860 mm
- Armrests	30 kg ea.	0°/+180°	455 x 75 mm

### Electronic Control

- All components according to IPX4
- Manual keypad with 4 individually programmable memory positions, auto-run function, reset button
- Foot keypad

### Battery unit

- Battery box with 2 batteries (lead-gel), pollution free, maintenance-free, cadmium-free 2 x 12 V 7.2 Ah
- As back-up-system exchangeable without tools

- Acoustic low voltage signal for discharge protection
- Universal battery charger Input: 100-240 V, Output: 24 V

### Operating Time Per Battery Charge

- Measured by operating circle (Prepare-Operate-Recover) 100 OPs
- Quantity of operating circles depends on individual operation

### Electromotive Drives

- Back, seat, foot, total up/down
- Trendelenburg/Reverse Trendelenburg

### Further Technical Details

- Chair has detachable, swiveling armrests made completely with PU foam
- Detachable seat for service friendly access to electric components

Max. Load 200 kg

Weight 100 kg

Subject to technical modifications.

**Distribuido por:**  
**Accutomex SA de CV**  
[www.accutomex.com](http://www.accutomex.com)  
[ventas@accutomex.com](mailto:ventas@accutomex.com)  
 Tel. +52 (81) 8347-2520 / 01-800-800-0507